



Beta

new items
FOR AUTUMN

valid FROM
01/09/2014
to 31/12/2014
PRICES do not include v.a.t.



3027 10

030270010

€ 1.255,00



HYDRAULIC BENCH PRESS WITH MOVING PISTON

- Manual 2-speed pump
- Moving piston
- Chrome-plated stand
- Automatic piston return
- Gauge
- Set of V-shaped prisms included

Maximum capacity: 10 t



1250x820x500 mm

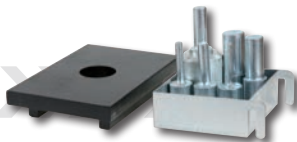
3027/KP10

030270510

€ 285,00

SET OF PIN PUNCHES AND PLATE FOR PRESS ITEM 3027 10

Pin punch ø:
5-10-14-18-24-29 mm



3027 50

030270050

€ 4.290,00



HYDRAULIC PRESS WITH MOVING PISTON AND HOIST

- Manual 2-speed pump
- Moving piston
- Chrome-plated stand
- Automatic piston return
- Hydraulic safety in case of overloading
- Gauge
- Set of V-shaped prisms

Maximum capacity: 50t



2200x1250x700 mm

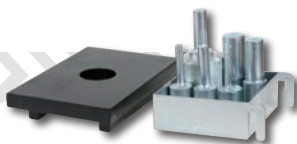
3027/KP50

030270550

€ 455,00

SET OF PIN PUNCHES AND PLATE FOR PRESS ITEM 3027 50

Pin punch ø:
5-10-14-18-24-29 mm



3027/KPP50

030270555

€ 185,00

PEDAL CONTROL FOR HYDRAULIC PRESS ITEM 3027 50



3026 0,3

€ 530,00



030260003

HYDRAULIC PIT AND UNDER BRIDGE JACK

- Maximum capacity: 300 kg
- Pedal pump
- Chrome-plated stand
- Nylon wheels
- Minimum height: 1120 mm
- Maximum height: 1970 mm



3026/S

€ 450,00

030260501

SWIVEL TRANSMISSION GEAR SUPPORT WITH REDUCTION BUSHES FOR JACKS ITEM 3026

Maximum capacity: 500 kg

3033/3T

€ 775,00



030330030

HYDRAULIC JACK, 3T LONG VERSION

- Particularly suitable for use on commercial vehicles
- Maximum capacity: 3t
- Polyamide wheels
- Length: 1180 mm
- Minimum plate height: 140 mm
- Maximum plate height: 520 mm



3025/PF

€ 226,00



030250011

BARREL HANDLING PLIERS



Maximum capacity:
300 kg



1889

€ 598,00



018890200

STEEL HANDLING AND STORAGE BASE
FOR 2 200-L BARRELS

- Completely hot painted with epoxy powder
- Easy to carry with a fork lift truck or a transpallet
- Support cannot be stackable



1210x740x330 mm

1498TB/12

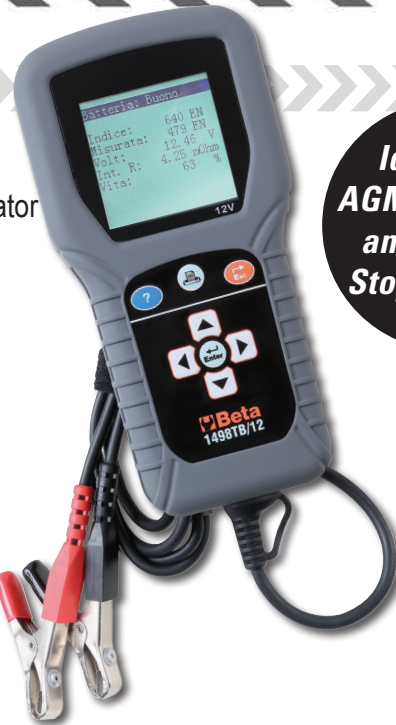
€ 465,00



014980400

DIGITAL BATTERY TESTER, 12V

- Allows the following to be tested: battery, alternator and starter
- Fitted with software for printing test from PC
- Backlit display
- Compact, shockproof frame
- 10 language software
- Complete with input for connecting a removable mini printer (optional accessory)



Ideal for:
AGM batteries
and Start &
Stop systems



370x270x100 mm

TECHNICAL DATA:

- Applications: 12V battery test - 12V alternator charge test - Starter test
- Operating range: 100-1700 CCA
- Reference standards: CCA, SAE, DIN, EN, IEC, JIS
- Batteries supported: PB, Wet, Gel, Agm, Mf, Vrla, Sli
- Voltmeter: 9V-15V
- Cable length: 180 cm
- Languages: Italian, English, French, German, Spanish, Polish, Romanian, Dutch, Swedish and Finnish
- Accessories included: USB cable and software



1498ST/TB

€ 175,00

014980410

MINI THERMAL PRINTER FOR TESTER ITEM 1498TB/12

- Mini printer can be directly connected to tester
- Allows test results to be printed



1498TC

€ 245,00

014980450



DIGITAL GLOW PLUG TESTER

Quick, accurate testing

- Suitable for all types of glow plugs, 4.4-5-7-8.5-10-11 Volts
- Digital backlit display
- Suitable for steel and ceramic glow plugs
- Short circuit and polarity reversal protection
- Turns off automatically when not in use
- With buzzer
- With SMD LED torch
- Compact, shockproof structure

- Measurement range: 0.00÷25.0Ω
- Tolerance: ± 2%
- Resolution: 0.01
- LED Display: 1.8"
- Operating temperature: 0° C ÷ 50 °C
- Power supply: 1 9V battery (not included)



1760PA/80

€ 155,00



017600002

AC/DC AMPEROMETRIC CLAMP, 80A

Specifically designed to measure low current leakage and absorption values on vehicles

- Range: 1mA-80A AC/DC
- Torch function with white LED
- Backlit LCD display
- Zero setting function
- Hold function
- Auto power off
- Power supply: 2 1.5V AAA-type batteries

*Ideal for low leakage values
1mA-80A*



High-brightness LED



1497/C94

€ 285,00

014970300

ASSORTMENT OF 94 CAR TESTING CONNECTORS FOR USE WITH MAIN DIAGNOSTIC TOOLS

ASSORTMENT CONTENTS:

- 2 t-taps
- 2 potentiometers
- 2 warning lights
- 2 SRS connectors
- 2 alligator clips
- 2 acicular probes
- 2 prods
- 2 dual banana connectors
- 4 single banana connectors
- 24 flat male terminals 0.6÷6 mm
- 12 round male terminals 1.6÷3.9 mm
- 24 flat female terminals 0.6÷6 mm
- 12 round female terminals 1.6÷3.9 mm

*Complete with
2 t-taps*



430x390x100 mm



960PI/P

€ 238,00

009600216

ASSORTMENT OF 14 SPECIAL TOOLS AND REAMERS FOR CLEANING INJECTOR SEATS

ASSORTMENT CONTENTS:

- 3 flat reamers, \varnothing 19/15 mm - \varnothing 17/17 mm - \varnothing 19/17 mm
- 2 angled reamers, \varnothing 21/17 mm - \varnothing 17/17 mm
- injector washer pulling tool
- cutter cleaning brushes
- injector cleaning brush
- handle and cutter accessories



373x280x61 mm

14 pieces



1758VT

€ 125,00

017580100

CYLINDER HEAD TESTING KIT

- Contrast liquid makes it possible to quickly check whether expansion tank contains any carbon dioxide.



290x190x50 mm

1505/C5

€ 105,00

015050300

12 mm

WINDSHIELD WIPER REMOVAL KIT

KIT CONTENTS:

- 1 two-leg puller, \varnothing 25÷40 mm
- 4 half-moon tools, \varnothing 25 mm, \varnothing 30 mm, \varnothing 35 mm, \varnothing 41 mm



320x150x60 mm

Half-moon tools no more than 5 mm thick



1471D2

014710301

€ 55,00

10 mm

**TOOL FOR PUSHING BACK DISC BRAKE PISTONS
WITH CLOSED CALLIPERS**

Two pairs of plates for working
on 2 and 4 piston callipers



250x170x60 mm

1477/C10

014770310

€ 115,00



**BENT WRENCH WITH 9 BITS
FOR BELT TIGHTENING NUTS**

in plastic case

Contents:

1 bent wrench with bit drive

4 double bi-hex bits:

○ 12x14 - 13x15 - 16x17 - 18x19 mm

5 bits for Torx® head screws:

⊙ E10 - E12 - E14 - E16 - E18



530x110x55 mm

1473FN

€ 47,00

014730501

**TOOL FOR TIGHTENING AND CUTTING
STRAP TIES MADE OF STAINLESS STEEL**

For use with Panduit® ties
and the like



1482B

€ 29,00

014820021

**QUICK COUPLER PLIERS
FOR FUEL PIPES**



1493FF

€ 19,00

014930127

○ 27 MM 1/2"

**WRENCH FOR REMOVING/INSTALLING
PLASTIC SEATS OF
FORD PEUGEOT CITROËN OIL FILTERS
ENGINES: TDCI-HDI**

Allows plastic seat to be correctly
tightened at 25 Nm by means
of a torque wrench



CITROËN

1884

€ 345,00

018840010

OIL FILLER TOOL FOR MANUAL AND AUTOMATIC GEARBOXES AND DIFFERENTIALS

Complete with 12 adaptors for direct connection

- Fitted with nonreturn valve for leakage-free oil filling
- Delivery: 70 cc per pump shot
- Tank capacity: 7.5 l
- Maximum permissible oil viscosity: SAE 140



12 ADAPTORS

FORD	AT-101
UNIVERSAL (Bmw, Honda, Nissan...)	AT-102
VW-AUDI	AT-103
VW-AUDI-PORSCHE	AT-104
VW-AUDI-MINI COOPER	AT-105
MERCEDES	AT-106
DSG	AT-107
VW-AUDI CVT	AT-108
VOLVO	AT-109
TOYOTA-LEXUS	AT-110
SKODA	AT-111
VW Passat/Tiguan <2007	AT-112



1878 11

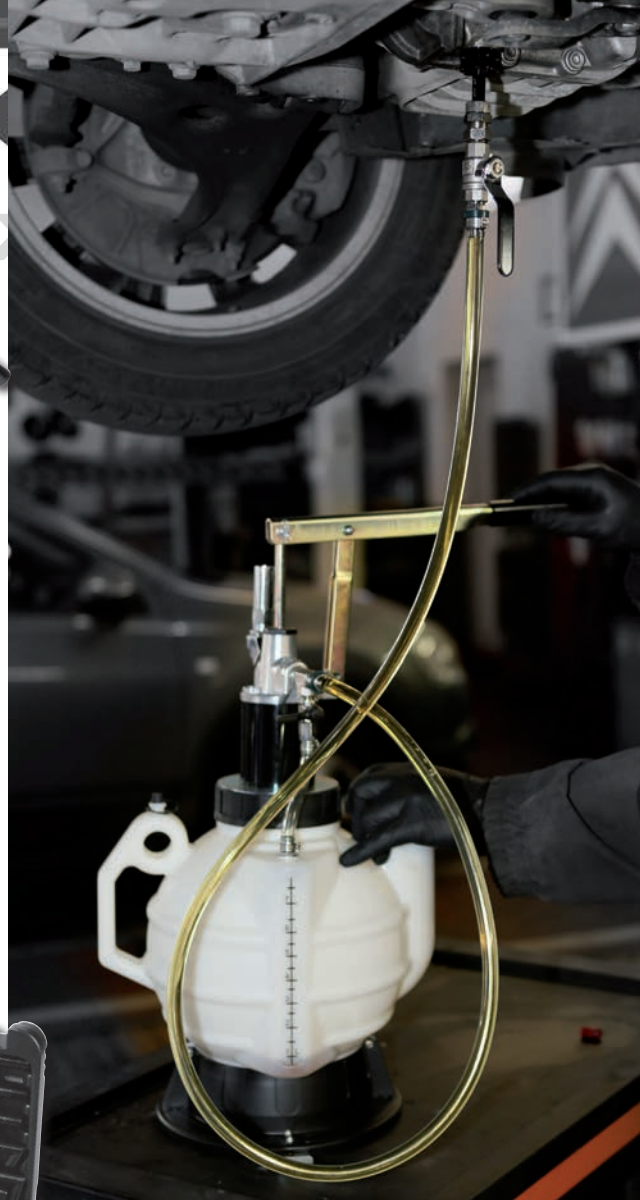
€ 25,00

018780011

FLUID COLLECTION TANK

- Maximum capacity: 11 l
- Fluid drain plug
- Interior wall for preventing fluid leakage during transportation

11 l



1878 30

€ 96,00

018780030

PIVOTING WHEELS

FLUID COLLECTION TANK

- Maximum capacity: 30 l
- Splashproof grate
- Fitted with 4 pivoting wheels



h 113 mm

30 l



1461/C22B

€ 350,00

014610202

**TIMING DEVICES FOR PEUGEOT/CITROËN
PETROL ENGINES**

Engines: 1.0-1.2 VTi



CITROËN

1461/C23B

€ 420,00

014610203

**TIMING DEVICES FOR OPEL
PETROL ENGINES**

Engines: 1.0 - 1.2 - 1.4 ecoflex



OPEL

1461/C26B

€ 305,00

014610206

**TIMING DEVICES
FOR FIAT/ALFA ROMEO/LANCIA
PETROL ENGINES**

Engines: 1.2-1.4 8v



1461/C21G € 370,00

014610201

TIMING DEVICES FOR RENAULT DIESEL ENGINES

Engines: 1.6 dCi



1461/C27G € 225,00

014610207

TIMING DEVICES FOR BMW DIESEL ENGINES

Engines: 1.6-2.0D (N47-N47S)



1461/C24B € 550,00

014610204

TIMING DEVICES FOR MINI-PEUGEOT/ CITROËN PETROL ENGINES

Engines: 1.4 - 1.6 (N12-N14)



1461/C25G € 140,00

014610205

TIMING DEVICES FOR MINI DIESEL ENGINES

Motori: 1.6 diesel (W16D)



AUTOMATIC HOSE REEL

- Aluminium body, for compressed air or cold water
 - Max. operating pressure: 15 bars
 - Polyurethane hose
- Frame made of die-cast aluminium painted with epoxy powder
 - Metal clamp, revolving
- Device for automatically fixing hose at desired length



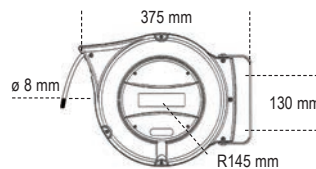
1910/8

€ 305,00



019100008

Ø1	8 mm
L	9+1 mm
Ø2	1/4" GAS
📦	6 kg



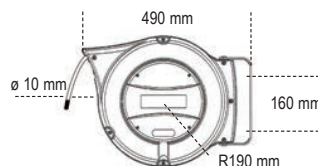
1910/10

€ 460,00



019100010

Ø1	10 mm
L	15+1 mm
Ø2	3/8" GAS
📦	9 kg



1936/4A**€ 310,00**

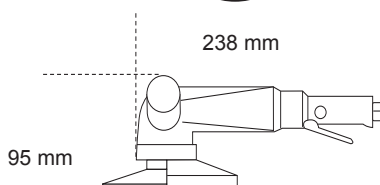
019360024

ANGLE GRINDER

- Extremely compact and handy
- Air governor for automatically controlling top speed
- Right-hand/left-hand auxiliary handle
- Spindle lock button
- Accessory for quickly changing discs
- Safety cap can be quickly adjusted in nine different positions through quick release

**115 mm**

Free speed	11.000 rpm
Grinding disc size	115 mm
Power	0,66 kW
Spindle thread	M14
Air inlet	1/4" GAS
Working pressure	6,2 Bars
Internal hose size (Ø)	10 mm
Mean air consumption	390 l/min
Weight	1,8 kg

**1946KF****€ 1.490,00**

019460012

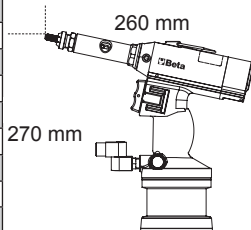
AIR RIVETER FOR THREADED RIVETS

- Powerful and handy, with handle made of composite material
- For use with threaded rivets made of steel, stainless steel, aluminium and copper, M4, M5, M6, M8



340x320x100 mm

Traction power	14.235 N
Stroke length	7 mm
Maximum rivet capacity	Stainless steel Ø, M8
Air inlet	1/4" GAS
Working pressure	6,2 Bars
Internal hose size (Ø)	10 mm
Air consumption	2.1 l/cycle
Air riveter weight	2,1 kg
Kit weight	3,4 kg

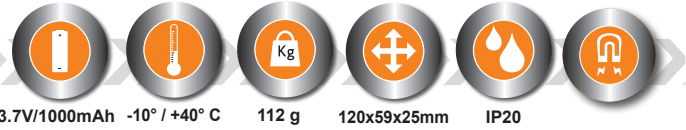


1838 COB

€ 65,00



018380010



COMPACT RECHARGEABLE INSPECTION LAMP WITH ULTRA-HIGH BRIGHTNESS LED. LITHIUM POLYMER BATTERY

- Compact body made of antislip rubber
- Swinging hook
- Magnetic base can be rotated 180 degrees
- With charger 100-240Vac / 50-60Hz
- 55 / 110 lumens
- Operating range: 5 / 2.5 hours
- IP20



COMPACT

1772R

€ 12,50

017720006

UTILITY KNIFE WITH RETRACTABLE TRAPEZOIDAL BLADE, SUPPLIED WITH 5 BLADES

- Interior blade storage
- Belt clip
- Sturdy aluminium frame

L mm	A mm
125	18



1778 CM

€ 23,00

017780099

CAMOUFLAGE FOLDAWAY KNIFE HARDENED STEEL BLADE

- Belt clip

L mm	A mm
198	24



1651DGT/IP

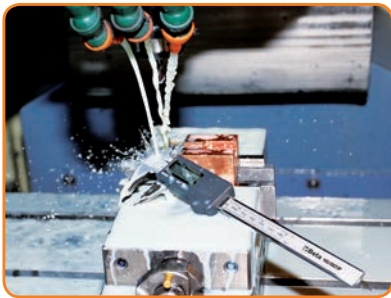
€ 225,00

016510611

DIGITAL VERNIER, MADE FROM HARDENED STAINLESS STEEL, READING TO 0.01 MM, DEGREE OF PROTECTION IP67

in hard plastic case

- Reading to 0.01 mm
- Screw slider locking
- Mm/inch conversion



DIN 862

IEC 60529

UNI EN ISO 13385-1

A max mm	L mm
150	235

mm 0,01
" 0,0005



270x115x35 mm

*Degree of protection IP67 provides total protection against dust and liquids maintaining the functional characteristics of the vernier, even when it is totally immersed

1651DGT

€ 107,00

016510112



DIN 862

UNI EN ISO 13385-1

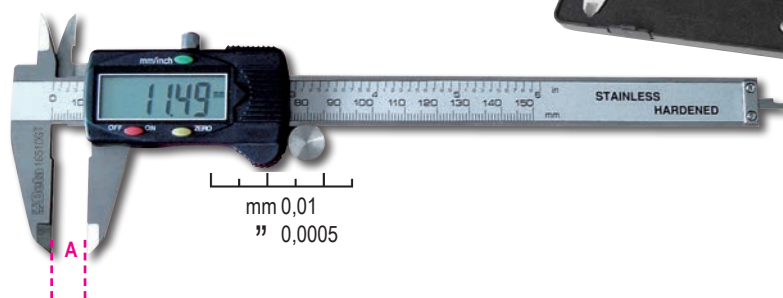
DIGITAL VERNIER

made from hardened stainless steel in hard plastic case

- Reading to 0.01 mm
- Screw slider locking
- Mm/inch conversion

A max mm	L mm
200	285

310x105x30 mm



1650

€ 58,00

016500002

DIN 862

UNI EN ISO 13385-1

SLIDING GAUGE

MADE FROM HARDENED STAINLESS STEEL IN LEATHER SHEATH

- Reading to 0.05 mm
- Spring locking

A max mm	L mm
200	290

mm 0,05
" 1/128



CP15

€ 33,00

021150201

TOOL BOX, MADE FROM PLASTIC, REMOVABLE TOTE-TRAY AND TOOL TRAYS, EMPTY

- 1 tool tray built into cover
- 2 removable tool trays with adjustable partitions
- 1 interior tote-tray with adjustable partitions
- Carrying capacity: 30 kg

445x240x250 mm



CP15L

€ 44,00

021150202

TOOL BOX, LONG SERIES, MADE FROM PLASTIC, REMOVABLE TOTE-TRAY AND TOOL TRAYS, EMPTY

- 3 tool trays built into cover with adjustable partitions
- 1 interior tote-tray with adjustable partitions
- Carrying capacity: 30 kg

558x277x270 mm



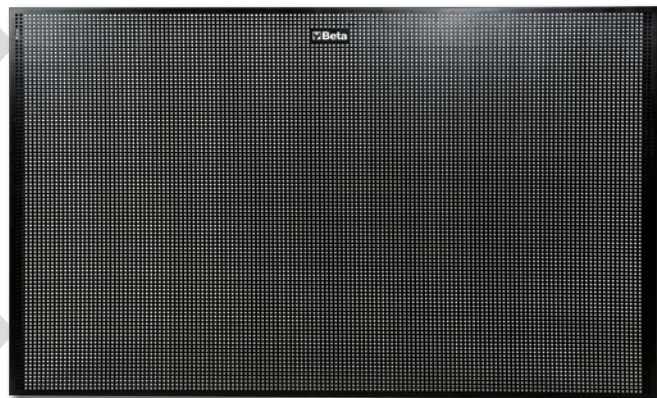
PV 1

€ 120,00

088880010

WALL TOOL PANEL

800 mm
1000 mm



PV 1,5

€ 162,00

088880015

WALL TOOL PANEL

800 mm
1500 mm

SUPPORTS ALL TOOL HOOKS AVAILABLE IN PRICE LIST, TO BE ORDERED SEPARATELY

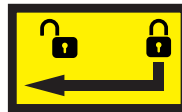
C04 INOX-7

€ 895,00

024003007

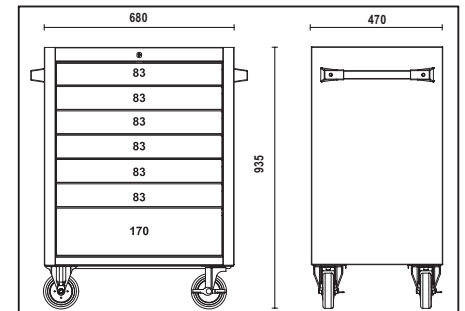
MOBILE ROLLER CAB WITH SEVEN DRAWERS MADE OF STAINLESS STEEL

- 7 drawers 570 x 410 mm with ball bearing slides;
- 6 drawers, 83 mm high;
- 1 drawer, 170 mm high;
- 4 castors 125 mm in Ø
- 2 fixed and 2 steering (two with brakes);
- Front centralized lock;
- Outer frame in stainless steel AISI 430
- Drawer handles made of aluminium
- Castors, ball bearing slides and inside of drawers in standard steel

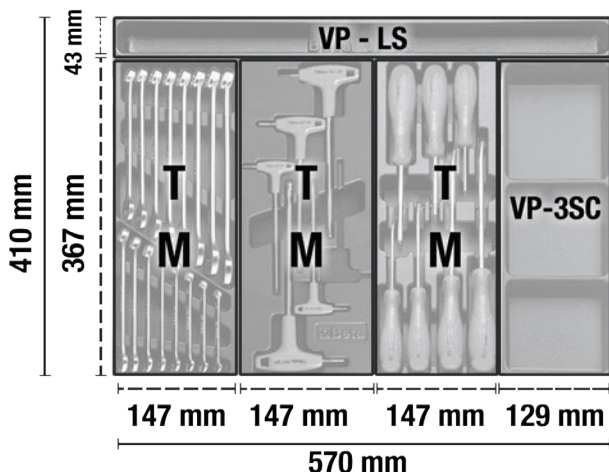


DRAWER HANDLES MADE OF ALUMINIUM

h		↓ max	
	83 mm		
	170 mm	30 kg	



Compatible with the Beta thermoformed tray system (see section "Thermoformed trays" in the price list and on the website)



7683

€ 102,00

SOFTSHELL JACKET WITH DETACHABLE HOOD AND SLEEVES

- Outer fabric: 94% polyester, 6% spandex, 290 g/m²
- Inner fabric: 100% microfleece polyester
- Jack with waterproof, windproof, breathable membrane (resistance to water columns up to 8,000 mm - breathability 1.000 mvp)



DETACHABLE HOOD WITH STRETCH WAIST STRING ADJUSTERS

DETACHABLE SLEEVES



TWO LARGE CHEST POCKETS WITH ZIP CLOSURE, ONE WITH BADGE INSERT

TWO LARGE CHEST POCKETS WITH ZIP CLOSURE, ONE WITH BADGE INSERT

TWO INTERIOR POCKETS

WAIST STRING ADJUSTERS

AVAILABLE AS FROM OCTOBER

S	076830001
M	076830002
L	076830003
XL	076830004
XXL	076830005
XXXL	076830006

7684

€ 85,00

SOFTSHELL JACKET

- Outer fabric: 94% polyester, 6% spandex, 290 g/m²
- Inner fabric: 100% microfleece polyester
- Jacket with waterproof, windproof, breathable TPU membrane (resistance to water columns up to 8,000 mm - breathability 1,000 mvp)



AVAILABLE AS FROM OCTOBER

CHEST POCKET WITH ZIP CLOSURE AND BADGE INSERT

TWO INTERIOR POCKETS

TWO LARGE WAIST POCKETS WITH ZIP CLOSURE

CUFFS WITH STRAP ADJUSTERS

WAIST STRING ADJUSTERS

S	076840001
M	076840002
L	076840003
XL	076840004
XXL	076840005
XXXL	076840006

AVAILABLE AS FROM OCTOBER

7733

€ 108,00

PADDED PARKA JACKET, WATERPROOF

- Outer fabric: waterproof Oxford polyester 300D with polyester 600D inserts, both PU-coated (resistance to water columns up to 2,000 mm)
- Lining: polyester 210T
- Padding: polyester, 180 g/m²

FRONT CLOSURE WITH ZIP, COVERED WITH A PRESS-STUD FLAP

FOLDAWAY HOOD WITH STRING ADJUSTERS

WINDPROOF CUFFS WITH STRAP ADJUSTERS

TWO LARGE CHEST POCKETS WITH ZIP CLOSURE AND SMALL POCKET WITH BADGE INSERT

INTERIOR CHEST POCKETS WITH ZIP CLOSURE, ONE WITH EARPHONE OUTLET

TWO INTERIOR WAIST POCKETS ADJUSTABLE WAISTBAND*

TWO LARGE WAIST POCKETS WITH PRESS-STUD CLOSURE

HAND WARMER POCKETS

S	077330001
M	077330002
L	077330003
XL	077330004
XXL	077330005
XXXL	077330006



7734

€ 137,00

AVAILABLE AS FROM OCTOBER

TRIPLE USE ANORAK JACKET, WATERPROOF

- Waterproof Oxford polyester 300D with polyester 600D inserts, both PU-coated (resistance to water columns up to 2,000 mm).
- Lining made of polyester 210T, padding made of polyester, 80 g/m²

DETACHABLE INTERIOR JACKET 100% POLYESTER, DOWN-LIKE PADDING, 80 G/M²

DETACHABLE INTERIOR JACKET CAN BE USED INDIVIDUALLY

INTERIOR CHEST POCKET WITH ZIP CLOSURE AND EARPHONE OUTLET

FOLDAWAY HOOD WITH STRING ADJUSTERS

FRONT CLOSURE WITH ZIP, COVERED WITH A PRESS-STUD FLAP

TWO LARGE WAIST POCKETS WITH PRESS-STUD CLOSURE, ONE WITH KEY HOOK

TWO CHEST POCKETS WITH PRESS-STUD CLOSURE, ONE WITH BADGE INSERT

WINDPROOF CUFFS WITH STRAP ADJUSTERS

ZIP OPENING FOR REAR CUSTOMIZATION



S	077340001
M	077340002
L	077340003
XL	077340004
XXL	077340005
XXXL	077340006

7526

€ 52,00

AVAILABLE AS FROM OCTOBER

WORK JEANS IN STRETCH DENIM COTTON SLIM FIT

- 68% denim cotton, 29% polyester, 3% stretch fabric, 10 ounces
- Polyester 600D reinforcements in rear pockets and on leg bottoms

XS	075260046
S	075260048
M	075260050
L	075260052
XL	075260054
XXL	075260056
XXXL	075260058

STONE WASHED



SLIM FIT

TWO LARGE FRONT POCKETS, ONE WITH SMALL POCKET

TWO REAR POCKETS

RULER POCKET AND HAMMER LOOP



TEARPROOF CROTCH



7816G

€ 54,50

AVAILABLE AS FROM OCTOBER

WORK TROUSERS, MULTIPOCKET STYLE

- T/C canvas, 65% polyester, 35% cotton, 260 g/m²
- Kneepad pockets and leg bottoms reinforced in polyester 600D

- STRETCH REAR INSERT FOR EASIER MOVEMENTS
- STRETCH WAIST ON SIDES
- WAIST KEY RING

XS	078160000
S	078160001
M	078160002
L	078160003
XL	078160004
XXL	078160005
XXXL	078160006



SLIM FIT

TWO LARGE FRONT POCKETS, ONE WITH SMALL POCKET

LARGE SIDE POCKETS WITH PRESS-STUD CLOSURE, ONE WITH BADGE INSERT

HIGHER WAIST IN REAR PART FOR INCREASED BACK PROTECTION

TWO REAR POCKETS WITH PRESS-STUD CLOSURE

HAMMER LOOP



TEARPROOF CROTCH



7981T

€ 8,00

079810111

WINTER CAP

- 100% acrylic fibre
- Lined in Thinsulate™, 40 g/m²



7985

€ 8,00

079850111

NECK WARMER MADE OF MICROFLEECE WITH ADJUSTER, BLACK

- 100% microfleece polyester, 180 g/m²
- String adjuster
- Can also be used as a hat



Zolder

NUBUCK ANKLE SHOE, WATERPROOF, WITH WATERPROOF MICROFIBRE INSERTS

- **UPPER:** Waterproof Nubuck with waterproof microfibre inserts
- **OUTSOLE:** Dual density polyurethane
- **TOE CAP:** Composite material, 200 joules
- **PENETRATION-PROOF:** Composite fibre, ceramic treatment
- **UNDERFOOT COVER:** Anatomically shaped, made of polyethylene + Cambrelle

EN ISO 20345 2011



S3 SRC

7253NKK

€ 105,00

EU	UK	
38	5	072530138
39	6	072530139
40	6,5	072530140
41	7	072530141
42	8	072530142
43	9	072530143
44	10	072530144
45	10,5	072530145
46	11	072530146
47	12	072530147

High



Le Mans

SUEDE ANKLE SHOE, WATERPROOF, WITH WATERPROOF NYLON INSERTS

- **UPPER:** Waterproof suede with waterproof nylon inserts
- **OUTSOLE:** Dual density polyurethane
- **TOE CAP:** Composite material, 200 joules
- **PENETRATION-PROOF:** Composite fibre, ceramic treatment
- **UNDERFOOT COVER:** Anatomically shaped, made of polyethylene + Cambrelle



S3 SRC

7259NKK

€ 93,00

EU	UK	
38	5	072590138
39	6	072590139
40	6,5	072590140
41	7	072590141
42	8	072590142
43	9	072590143
44	10	072590144
45	10,5	072590145
46	11	072590146
47	12	072590147

High



7258NKK

€ 89,00

EU	UK	
38	5	072580138
39	6	072580139
40	6,5	072580140
41	7	072580141
42	8	072580142
43	9	072580143
44	10	072580144
45	10,5	072580145
46	11	072580146
47	12	072580147



Low



AVAILABLE AS FROM OCTOBER

EN ISO 20345 2011





S1P SRC

**SUEDE SHOE
WITH MESH INSERTS**

- **UPPER:** Suede with mesh inserts
- **OUTSOLE:** Dual density polyurethane
- **TOE CAP:** Steel, 200 joules
- **PENETRATION-PROOF:** Stainless steel
- **UNDERFOOT COVER:** Anatomically shaped, made of carbon

7248G

€ 45,00

Low



EU	UK	
35	2,5	072480135
36	3,5	072480136
37	4,5	072480137
38	5	072480138
39	6	072480139
40	6,5	072480140
41	7	072480141
42	8	072480142
43	9	072480143
44	10	072480144
45	10,5	072480145
46	11	072480146
47	12	072480147
48	13	072480148

7249G

€ 46,50

EU	UK	
35	2,5	072490135
36	3,5	072490136
37	4,5	072490137
38	5	072490138
39	6	072490139
40	6,5	072490140
41	7	072490141
42	8	072490142
43	9	072490143
44	10	072490144
45	10,5	072490145
46	11	072490146
47	12	072490147
48	13	072490148



High



**EN ISO
20345
2011**



998015053



Beta Utensili S.p.A.
Via A. Volta, 18
20845 Sovico (MB)
Tel. +39.039.2077.1
Fax +39.039.2010742
www.beta-tools.com
info@beta-tools.com

*The pictures should be used
as an indication only. Beta Utensili S.P.A. may make
updates and improvements to its product range without notice*